

KAIT *Vision60*

60TH ANNIVERSARY PROJECT

Contact us if you have any questions about KAIT Vision60

General Administration Division, Office of Business Management

Tel. 046-241-1214

E-mail soumu@kait.jp



1030 Shimo-Ogino, Atsugi, Kanagawa,
243-0292, Japan



www.kait.jp/



KAIT is an abbreviation of Kanagawa Institute of Technology.

KAIT is evolving further toward a bright future!



Kenichiro NAKABE
Chairman of the Board,
Ikutoku Gakuen



Kazumi KOMIYA
President of Kanagawa
Institute of Technology

Ikutoku Gakuen, Kanagawa Institute of Technology will celebrate its 60th anniversary in 2023. We would like to once again express our gratitude for the efforts of our students, who play a leading role in the university, the faculty and staff who encourage their growth, and the support of the local community, businesses, parents, and all other concerned parties for making this milestone year possible.

As we approach our 60th anniversary, we are planning and promoting a variety of commemorative projects, among which we have decided to formulate a long-term vision "KAIT Vision60" to envision what our university will be like in about 20 years and to declare it to the world. "KAIT Vision60" is a long-term goal for Kanagawa Institute of Technology to further develop on the occasion of its 60th anniversary, taking into consideration the changing social trends and the roles required of an institution of higher education. The KAIT Vision60 Study Group, consisting of faculty and staff, was in charge of the formulation of the vision, which took one year to complete. As described in detail in the main text, the core long-term goal of this vision is "to be a university that creates the future by building on tradition," and to realize this goal, we have established four basic policies: People: Education, Knowledge: Research, Bonds: Regional Collaboration and Contribution, and Power: Organization. This vision will be steadily embodied in our mid- and long-term implementation plans.

Since its foundation, KAIT has accepted a diverse range of students based on its founding spirit, philosophy, and educational objectives of "developing human resources who contribute to the advancement of science and technology and strengthening cooperation with local communities", and produced more than 30,000 engineers and professionals through "education that builds strength and confidence" While building on these achievements, we will take the opportunity of the KAIT Vision60 declaration to lead the future era, and all faculty and staff will work together to further develop the university. We hope that you will look forward to the future of Ikutoku Gakuen, Kanagawa Institute of Technology, and we look forward to your continued guidance and support.

■ KAIT Vision60 Review Conference

Katsumi NAKATSUHARA
Professor / Faculty of Engineering

Yasuhiro IIDA
Professor / Faculty of Applied Bioscience

Shigeki SHIOKAWA
Professor / Faculty of Information Technology

Junichi KAJIURA
Senior Manager / Office of Business Management

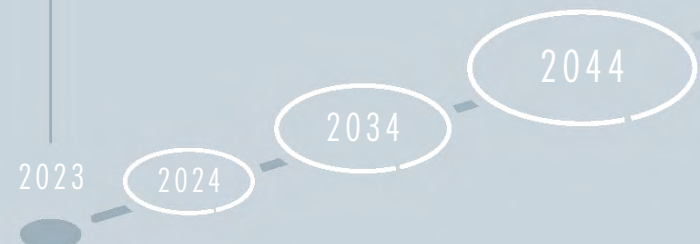
Ayumi KOIKE-TAKESHITA
Professor / Faculty of Applied Bioscience

Takanori SATO
Section Chief / Office of Business Management

Jun SAWAI
Professor / Faculty of Health and Medical Sciences

(Affiliations and positions are as of March 2023.)

- Board of Directors decides to develop a long-term vision for the 60th anniversary
- April 16, 2022 (Fri) Inauguration of the core members' study group
- June 1, 2022 (Wed) Inauguration of the KAIT Vision60 review conference
- September 26, 2022 (Mon) Briefing held at the Vice Presidents and Deans Meeting
- October 18, 2022 (Tue) Briefing at the Board of Directors meeting
- December 13, 2022 (Tue) Explanation given at the Board of Trustees meeting
- January 26, 2023 (Thu) Explanation given at the Ikutoku Gakuen Alumni Association Board of Directors meeting



KAIT Vision60

To be a university that creates the future by building on tradition

[Goal]

[Policy]

The four elemental initiatives will interlock and integrate with each other to shape the future of KAIT and society.



Founding Philosophy

The university will strive to strengthen ties with the local community through education and research in line with its founding philosophy of contributing to the nation of science and technology by attracting a wide range of students with a strong desire to study and nurturing engineers with abundant creativity, broad perspective, and creativity.

Concept

If we trace the power that creates the future of society, we will arrive at education. Society will increasingly demand an environment where anyone with a desire to learn can do so for as long as they live, regardless of their family environment, gender, or age. Since its foundation, the university has been producing human resources who will lead Japanese industry based on an education that emphasizes practical learning and responds to the individuality of each student. By bringing together the diverse strengths of the university, we will nurture people who can discover and solve problems with flexible ideas and create new value through technology, tackle issues ranging from the familiar to global issues with knowledge, and form bonds together with local communities where individuals can fully demonstrate their individuality and abilities, contributing to a prosperous and sustainable future.

As we celebrate our 60th anniversary, we will continue to create new technologies and human resources to support future society, while building on our traditions, and aim for further development to pass on "social and regional development, coexistence with the natural environment, and bonds with all people associated with our university" to the next generation.



Nurturing people for the future

Develop education that builds strength and confidence to nurture our growth throughout our lives

- Formation of the ability to respond to changes in the times and society
- Promotion of education that meets the needs of the times
- Education for human resource development
- Development and provision of extracurricular activities and social contribution activities
- Formation of capabilities to promote changes in the times and society
- Providing practical education and fostering professional human resources through industry-academia collaboration
- Creating a university structure that people can use throughout their lives

Based on the core of our founding philosophy, "to contribute to the nation of science and technology by fostering highly creative engineers with abundant creativity and broad perspective," we will develop the "education that builds strength and confidence" cultivated to date and **nurture human resources who will continue to grow throughout their lives.** To this end, the faculty and staff will work together to discover, guide, and develop the potential of each and every one of our diverse students, and provide education that forms the foundation for responding to the changing times and society. Furthermore, while flexibly responding to the demands of society as it enters a new era in graduate school, we will develop **human resources who can create and support the future by acquiring applied and practical skills.** In practical education and education that promotes social implementation, the curriculum will focus on PBL (Project-based Learning) education that emphasizes hands-on experience and real-world experience with regional cooperation and industry-government-academia collaboration to be designed to meet the quality assurance required by society, and to enable students to graduate with satisfaction and confidence.

In addition, as education that meets the needs of the times, we will expand and strengthen university-wide mathematical and data science education in response to Society 5.0, as well as education that responds to the SDGs (Sustainable Development Goals) and fosters the creation of a sustainable and better society in harmony with the natural environment.

Furthermore, the university's education is not limited to students enrolled in the university, but supports **the education of the next generation of human resources** by collaborating with primary and secondary education to help them to form intellectual creativity and develop an attitude of working independently and collaboratively, and by utilizing the university's resources. In terms of learning for working adults, the university will provide **recurrent education and reskilling** that responds to the changing of the times, as well as a place to study that enriches the mind and fulfills the purpose of life, and will further promote regional cooperation to become **a university that people take advantage of throughout their lives.**



Creating knowledge for the future

Become a center for the creation of new knowledge, technology, and value in cooperation with the community

- Promoting research that contributes to the resolution of social issues
- Strengthening basic research (seed creation)
- Social implementation of research results
- Creating a mechanism for research in new fields to flourish
- Research hub for creating a future that is close to people's lives
- Research center for creating new knowledge, technology, and value

Together with students who will lead the future, we will promote research to support "people's lives and health and live better in the age of a 100-year life," and to create a virtuous cycle of conservation and utilization of the global environment, including carbon neutrality. While respecting the research fields and research systems that have been cultivated by the university, all faculty and staff of the university, including **graduate students who have opportunities to play active roles as research staff,** will work together to promote research that contributes to solving social issues, always with an eye to society and the challenge of social implementation.

Furthermore, we will promote research related to Society 5.0, a new society, **strengthen cooperation with local communities and businesses,** and **become a part of urban development** that highly integrates cyberspace and physical space. In order to **become a research center that creates new knowledge, technology, and value** 20 years into the future, we will strengthen our ability to promote basic research by developing and organically functioning research resources within the university, **foster intramural joint research** that brings accelerated results through synergistic effects, and **creating a system for research in new fields to flourish.** At the same time, we will utilize the research results and technological capabilities produced by the university in science education and contribute to the development of human resources who will be responsible for future research and development.

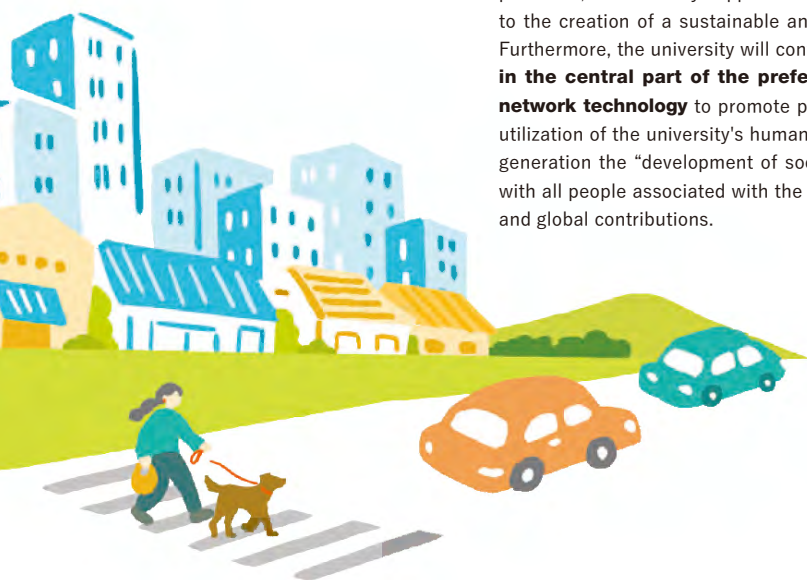
Building the bonds for the future

Become a university that is trusted as a center of knowledge in the local community in the era of a 100-year life

While respecting the history and traditions of Kanagawa, in order to create and support the future of Japan and lifestyles, the university will **strengthen ties between the university, local communities and industries**, foster ties between the university's faculty, staff, and students and the general public, and engage in activities that contribute to society. Furthermore, the university aims to become **a center for urban development to realize Society 5.0 in a proactive manner** through making full use of new technologies such as ICT (Information and Communication Technology), AI (Artificial Intelligence), and data science to solve social and regional issues.

As we enter the era of a 100-year life, we will provide **lifelong learning opportunities** so that all people in the region can lead fulfilling lives as well as science literacy education and hands-on classes **using examples and results of our research** for elementary and secondary education. We will conduct collaborative education rooted in the local community to contribute to the development of human resources who will lead the future, and to improve the visibility and brand power of the university. In addition, the university will promote activities to improve people's health, disaster prevention and disaster care, and in particular, continuously support students' activities to contribute to the local community, thereby contributing to the creation of a sustainable and vibrant community where **students and citizens can live together**. Furthermore, the university will contribute to society by **taking advantage of the geographical conditions in the central part of the prefecture**, which is developing as a logistics hub, as well as **by utilizing network technology** to promote people-to-people exchanges and global collaboration, and to promote the utilization of the university's human and material resources. Moreover, the university will pass on to the next generation the "development of society and the region, coexistence with the natural environment, and ties with all people associated with the university" that the university aims to achieve through its social, regional and global contributions.

- Strengthening collaboration between the university (faculty, staff, and students) and the local community
- Promoting collaboration with companies
- Creating a community that achieves Society 5.0 and coexistence with the natural environment
- A center of knowledge in the local community to create and support the future
- Progress toward global collaboration



Growing into a strong and flexible organization for the future

Become a strong and flexible organization whose diverse members cooperate to do their utmost to nurture students

- Building an organization that makes the most of individual characteristics and collaborates with others
- Establishing a social position as an educational institution
- Promotion of desired functions as a center for community development
- Advancement toward global collaboration

In order to promote the basic policies of "education," "research," and "social contribution" for the future, the Board of Directors, staff, faculty, student institute, and alumni association will build **organizational capabilities that enable them to work together while taking advantage of their respective characteristics**. We will value **opportunities to exchange opinions** among faculty and staff, among departments and faculties, and among staff divisions, to deepen the bonds among the university's faculty and staff, and to create a system that can respond to the changing times and society, and flexibly continue to improve. In the development of human resources who will lead the future, the university will promote education that enables students to demonstrate their abilities in a changing society by responding to the diversity of students and enhancing a system that comprehensively supports students in their studies, daily lives, and career paths, based on the student-oriented principle. In addition, the university will deepen its ties with primary and secondary education and with the local community, as well as strengthen its organizational capabilities to become a university that people use throughout their life.

Furthermore, in order to promote strategies formulated for the future of the university, such as education, research, securing enrollment, and obtaining grants, **the General Planning and Support Office (tentative)** will be established and operated as a department **that coordinates the human, material, and empirical resources of the university in a comprehensive and cross-sectional manner** and effectively utilizes them. The organization aims to create creative time by utilizing DX (Digital Transformation) such as ICT, AI, and data science, to vitalize people's interaction. It also strives to become a center of collaboration with local communities, companies, and foreign partner universities, and to contribute to the conservation of the global environment and realization of a virtuous circle society and region while creating new knowledge, technology, and value.

